

# *Gulf Coast Petrochemical*

INFORMATION NETWORK

---

## A Brief History of “GC-PIN”

June 2009

GC-PIN began in 2004 to

*Connect Strengths*

of four industrial communities to provide a

*Skilled Workforce*

for the refining and petrochemical industries in  
Brazoria, Chambers, Galveston and Harris  
Counties for

*Today and Tomorrow.*

---

*Gulf Coast Petrochemical*

INFORMATION NETWORK

# *Gulf Coast Petrochemical*

## INFORMATION NETWORK

### Mission:

- Leverage resources available to the participating community colleges
- Provide a forum for information exchange between industry, economic alliances, community colleges and H-GAC on issues related to workforce training, workforce development and building a pipeline of industry ready candidates for employment in the refining and petrochemical industries
- Keep a “pulse check” on developing trends in the number and capability of new entrants into the industries
- Provide grass root response capability to advocate local legislative and regulatory members on matters of workforce development
- Keep abreast of progress made on grants issued collectively to the GC-PIN community colleges
- Keep industry informed of capabilities that exist in the community colleges and get input from industry on future needs

# *Gulf Coast Petrochemical*

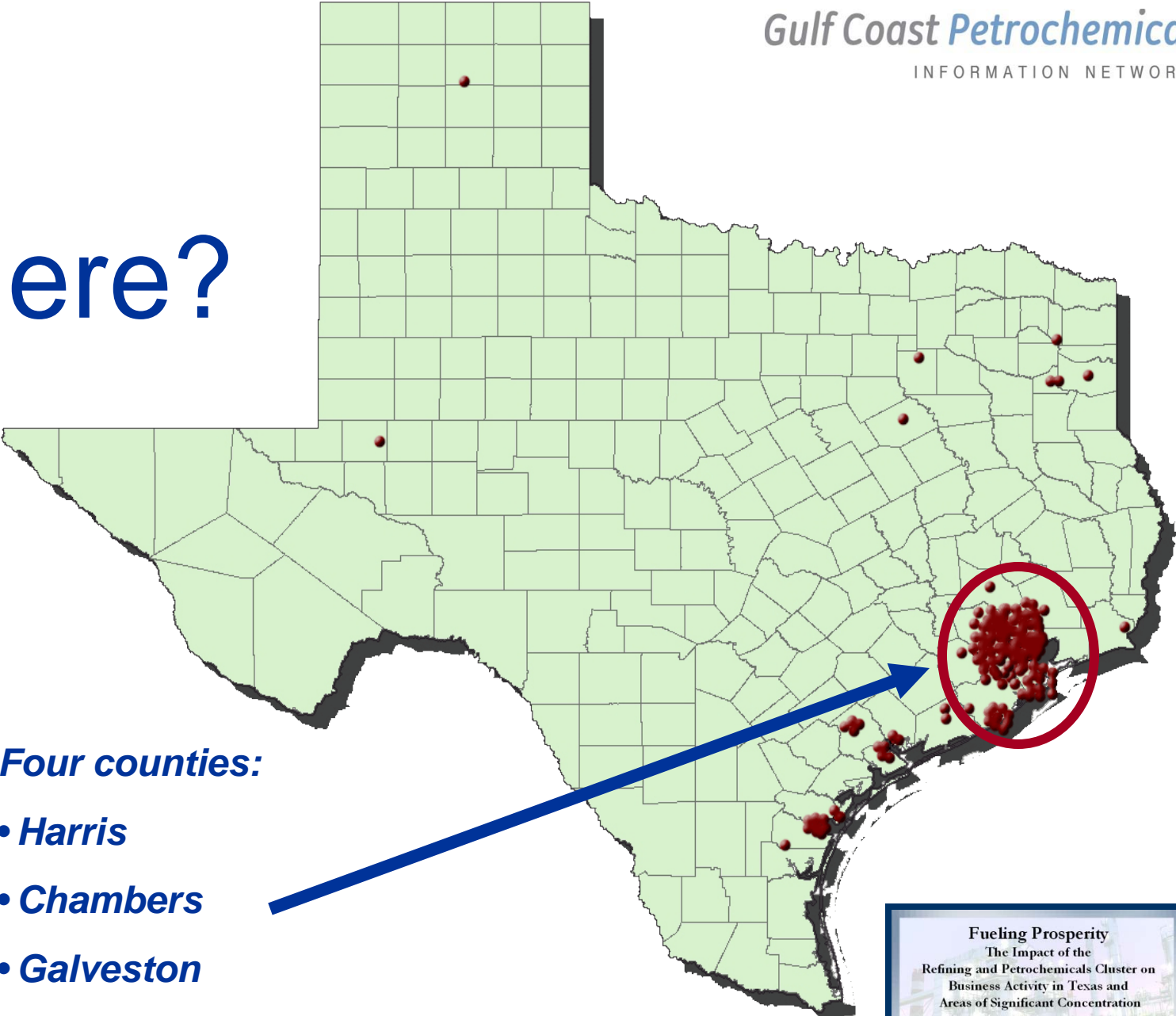
## INFORMATION NETWORK

The GC-PIN is guided by a group of industry representatives whose responsibility is to:

- provide input to GC-PIN to ensure the activities are based on real needs in industry and that the solutions will be supported by industry
- serve as a resource to each other on workforce development issues
- serve as a regional voice to the three plant manager groups and the TCC on matters related to workforce development
- be a resource to the plant manager groups and TCC to make recommendations on regional solutions

The steering team includes six industrial representatives, two each appointed by the Brazoria County Petrochemical Companies plant managers group, the East Harris County Manufacturer's Association Board and the Texas City Plant Managers Group. The Grant Director for the DOL Community Based Job Initiative and a facilitator are also members.

# Where?



***Four counties:***

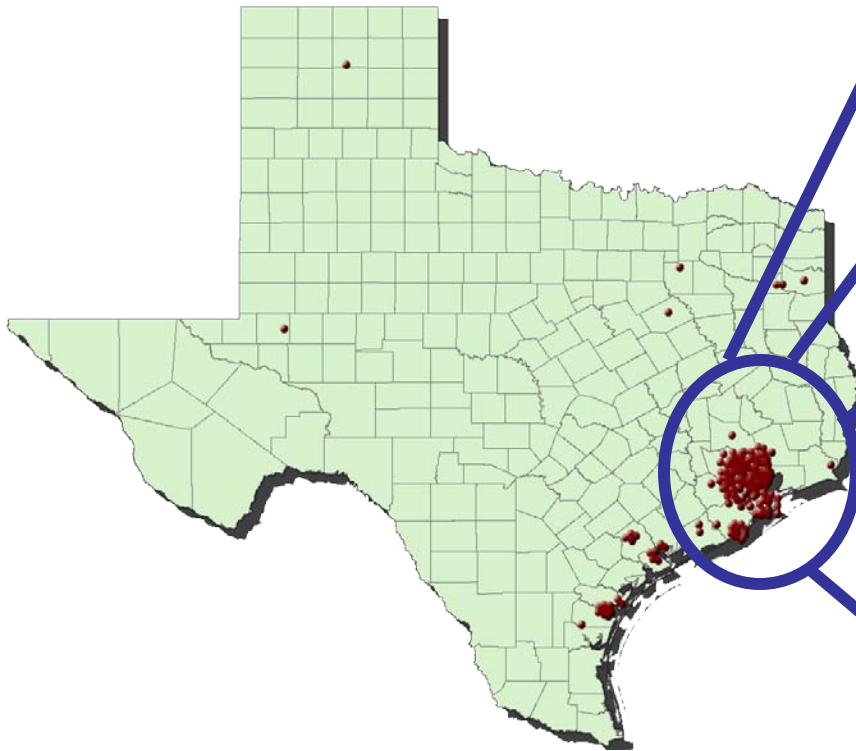
- ***Harris***
- ***Chambers***
- ***Galveston***
- ***Brazoria***

**Fueling Prosperity**  
The Impact of the Refining and Petrochemicals Cluster on Business Activity in Texas and Areas of Significant Concentration



THE PERRYMAN GROUP

# Who?



## **Brazoria County Community Partners:**

- *Economic Alliance of Brazoria County*
- *Brazosport Community College*
- *Brazoria County Petrochemical Companies*

## **Chambers County Community Partners:**

- *Baytown West Chambers Economic Development Foundation*
- *Lee College*
- *East Harris County Manufacturers Association*

## **Galveston County Community Partners:**

- *Galveston County Economic Alliance*
- *College of Mainland*
- *Texas City Plant Managers Group*

## **Harris County Community Partners:**

- *Economic Alliance Houston Port Region*
- *San Jacinto College District*
- *East Harris County Manufacturers Association*

## **Governmental Groups Solicited for Assistance:**

- *Texas Workforce Commission*
- *Gulf Coast Work Source*
- *Governor's Cluster Initiative and Competitiveness Council*
- *Federal and State Elected Officials*

# Why Collaborate?

In current political and budget climate, collaborations are more likely to attract state and federal funding.

Better chance for success exists when all segments of leadership, expertise and influence are collectively engaged.

With billion dollar expansions in Beaumont/Port Arthur and “baby boomer syndrome”, companies are “robbing from each other”.

Again, better chance for success exists when a collective system is in place over large geographic area that provides more advocacy strength.

# What's been done by this four-county community collaboration since 2004

## **2004 –**

Because of fear of job losses and an emerging debates over industrial property values in the four county area, a community driven economic development collaboration was created over 4 counties. This collaboration sought and secured federal funding from Congressman Tom DeLay to determine status of industry. One of the non-profit groups, the Economic Alliance Houston Port Region, served as grant project manager, and later hired consultant Dave Johnson, previous plant manager, to assist. Plant Manager Steve Pocsik served as industry leader.

## **2004 – 2005 Phase 1 of Industry Task Force (ITF) federal grant:**

Researched issues and conducted an economic study using nationally recognized Dr. Ray Perryman as expert economist. This was paid for by the federal grant mentioned above. The Governor's Petrochemical and Refining Cluster Team led by Phil Anastasio of Oxy on behalf of TCC expanded the survey audience to include all the plants in Texas. In this study, **Workforce cited as issue to be addressed!**

## **2006 – 2007 Phase 2:**

**Formed Solution Teams, one team** (named the Workforce Development Solution Team) **addressed the Workforce Issues**. This team (recently re-named **GC-PIN**) secured funding and developed solutions to start implementing solutions in 2007. Plant manager groups invited to “roll-out” presentations made in all four counties on this progress. Dennis Winkler, previous industry employee with Shell, was hired to help with communications of the rollout meetings.

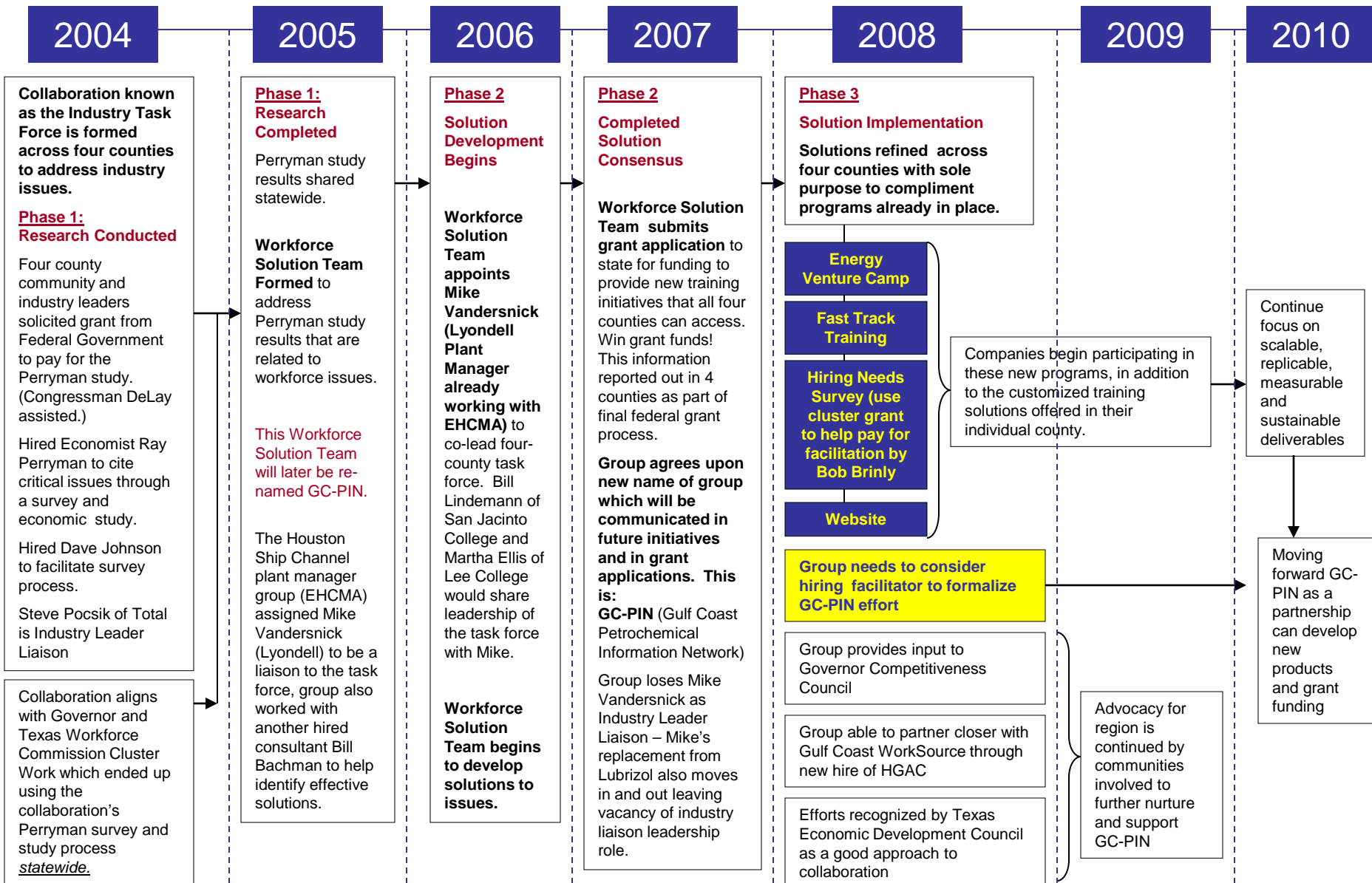
## **2008-2009 Phase 3: - Next slide**

# What's going on now in 2009 – Phase 3

**2008 – 2009 Phase 3:** Now implementing solutions developed during first phases:

- Formally organized to manage the four county workforce collaboration.
- Applied for and obtained a \$2.3M grant from DOL Community Job Based Initiative
- Continuing to communicate the new name of the collaboration as GC-PIN (Gulf Coast Petrochemical Information Network)
- Conducted a Workforce Needs Assessment Survey among plants in four counties
- Implemented Fast Track Operator Training
- Piloted Energy Venture Kids Camp with 5 camps and 100 students in 2008. 2009 goal is 4-500 students
- Steering team of industry leaders engaged
- Developing Regional Workforce Strategy Document using Brazoria County as a pilot

# Evolution of Collaboration



Function Represented	Area Represented
Industry <i>(These members also form the GC-PIN Steering team)</i>	Brazoria County
	East Harris and Chambers County
	Texas City
Community Colleges	Brazosport
	College of the Mainland
	Lee College
	San Jacinto College
Economic Alliances	Baytown and West Chambers Co
	Brazoria County
	Galveston
	Port of Houston Region
H-GAC/GC Workforce Development Board	13 county area
Grant Director - Community Based Job Grant <i>(steering team member)</i>	4 county area (grant administered by Lee College)
GC-PIN facilitator/Grant Consultant	4 county area (grant administered by Lee College)

Members  
June 2009